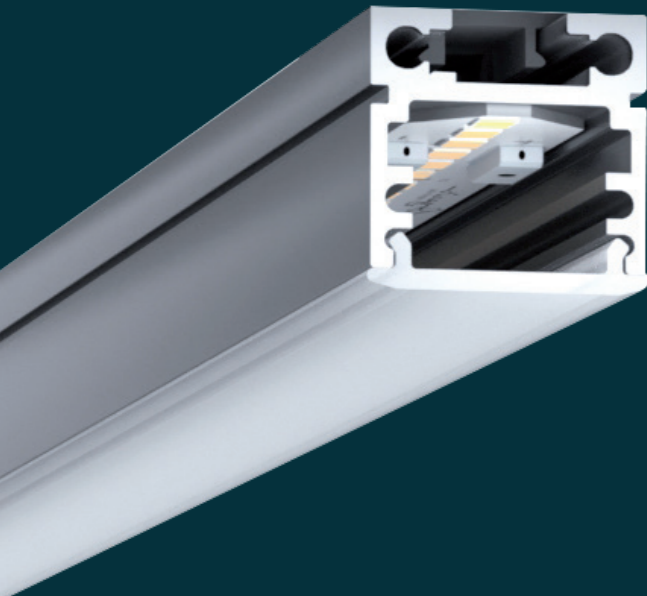


# UC18.18

SURFACE

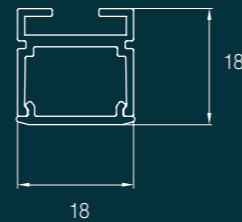


## Description

The smallest profiles family, available in all options. Enables the construction of long light lines, decorative effects and general lighting outlays. The profile ensures unique lighting homogeneity with invisible LED points. All diffusers are made of polycarbonate, which are resistant to multiple mounting and also are devastation resistant. We offer two types of diffusers and two types of black masking plates:

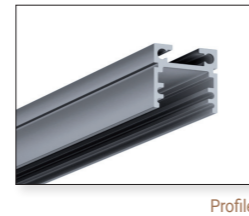
- satin – internal and with side light effect;
- black for power led solutions or as masking plates for electric cables distribution.

Additionally, we offer external power supply and inspection cover. We provide special solution for easy prolongation and connection of profile lines.



## Technical Specification

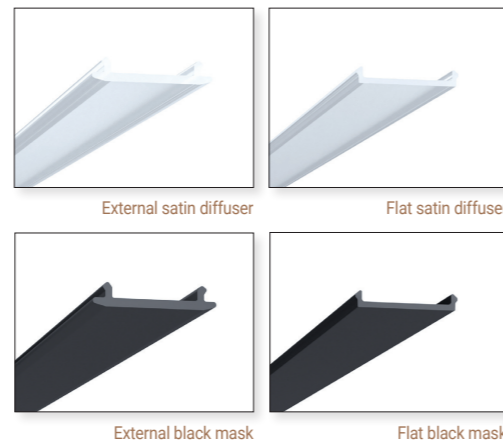
- Profile dimensions: Height 18 mm, Width 18 mm
- Material and finishing: anodized or powder-coated aluminum in white, black (other colors on request)
- Available lengths: 1.2m; 2.4m; 4.8m
- Dedicated satin diffuser for homogeneity of glow
- Dedicated mounting clips for profile building
- End caps made of plastic available in grey color (other colors on request)
- Steel connectors available for building straight lines and connecting lines at 90°vertical and horizontal and 135° angles
- LED power supplies used outside the profile (inspection cap for suspended ceilings available)



Profile

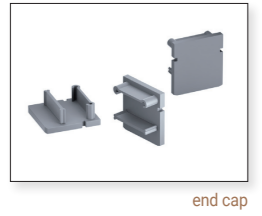
## We offer two types of diffusers and two types of black masking plates:

- satin – internal and with side light effect;
- black for power led solutions or as masking plates for electric cables distribution.



## End Caps

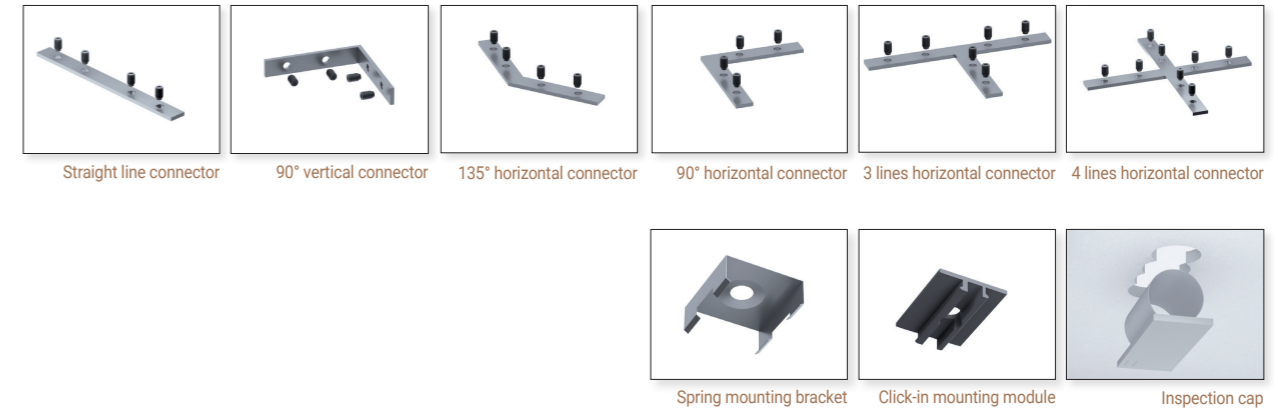
We offer plastic end cap which perfectly fits to the profile. End caps made of plastic available in grey color (other colors on request).



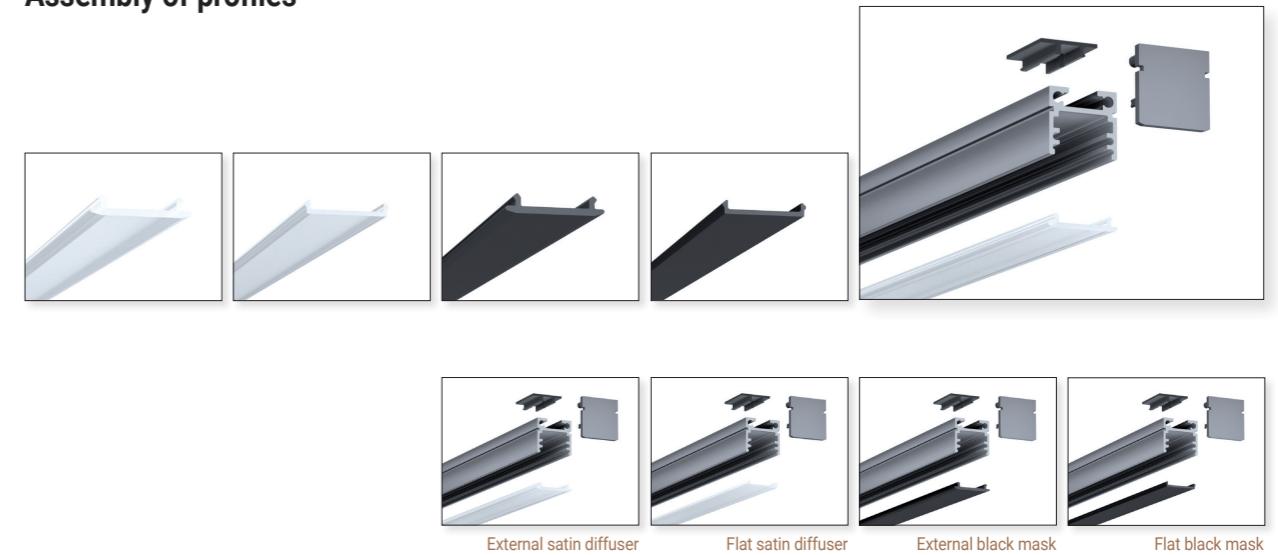
end cap

## Accessories

We offer unique accessories for easy installation based on a click-in mounting module and steel connectors available for building straight lines and connecting lines at 90°vertical and horizontal and 135° angles.



## Assembly of profiles



## Colors

