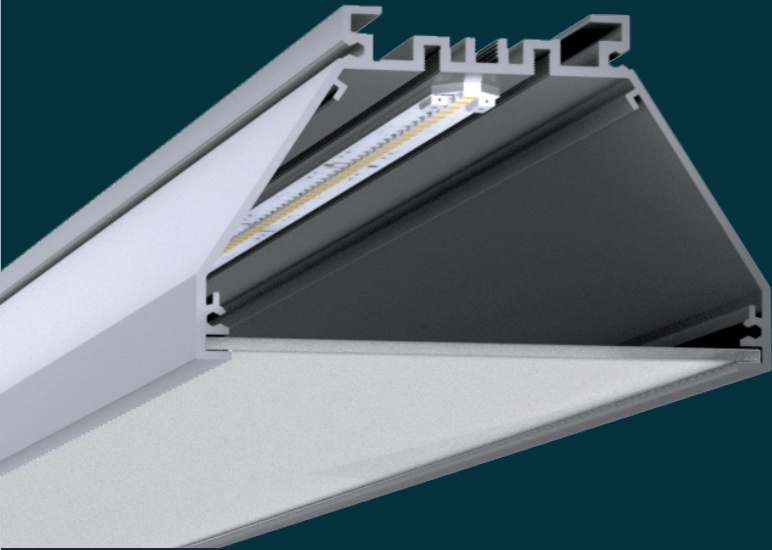


LK100C

SURFACE



Description

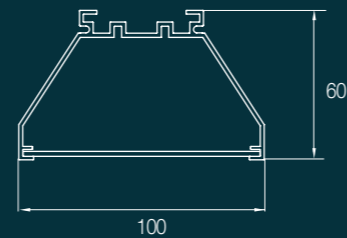
LK100 currently the largest in our family of profiles with the dimension 100 x 60. Initially designed as general lighting solution for office, school and hospital buildings, Nowadays it also seems to be ideal for lighting industrial facilities. The glowing surface of the diffuser 100 mm ensures both easy to achieve homogeneity of glowing and low UGR < 19.

We offer different types of diffusers:

- satin
- microprism

The depth of the profile of 5cm gives many possibilities of light sources used, from medium power SMD diodes, through power led diodes on 230V panels. It is possible to use both the suspended, built-in and built-in version in the suspended ceiling.

Ignition system mounted independently on the power cord or on the top of the housing in the second class of protection (in the 230V version the ignition system is not required)



Technical Specification

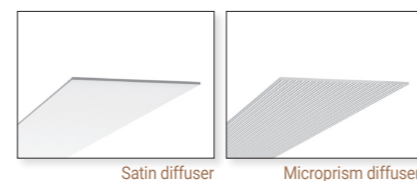
- Profile dimensions: Width 99 mm, Height 61 mm
- Material and finishing: anodized or powder-coated aluminum in white black (other colors on request)
- Available lengths: 1.2m; 2.4m; 4.8m
- Dedicated satin or microprism diffuser
- End caps made of steel available in grey color (other colors on request)



Profile

We offer two types of diffusers:

- satin
- microprism

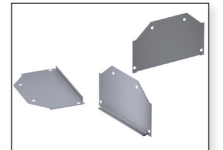


Satin diffuser

Microprism diffuser

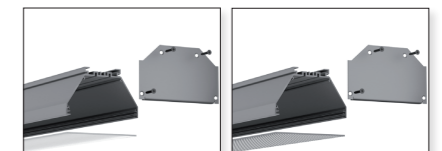
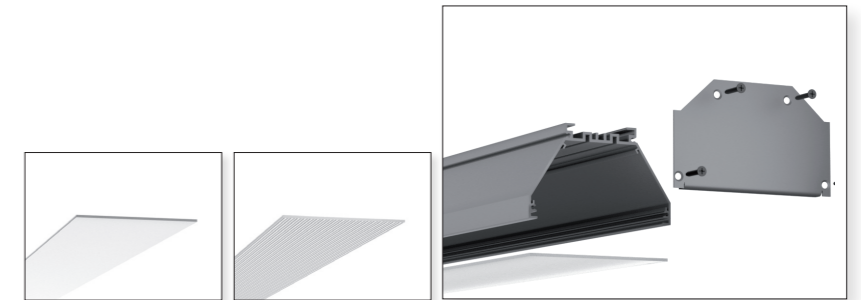
End Caps

We offer steel end cap which perfectly fits to the profile. End caps made of steel available in grey color (other colors on request)



End Cap

Assembly of profiles



Satin diffuser

Microprism diffuser

Colors

